



## LED NEON FLEX SPECIFICATION

IP67 NEON 2020 24V SIDE VIEW



# IP67 NEON 2020 24V SIDE VIEW

**LCE** LED & COMPONENTS EXPERT

Regular power 5W/m,10W/m and 15W/m for option

Max length 27 meters with one end power

Integrated extrusion molding process

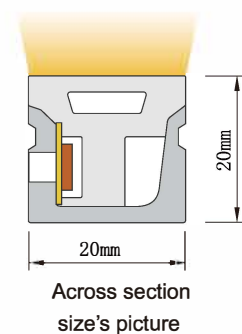
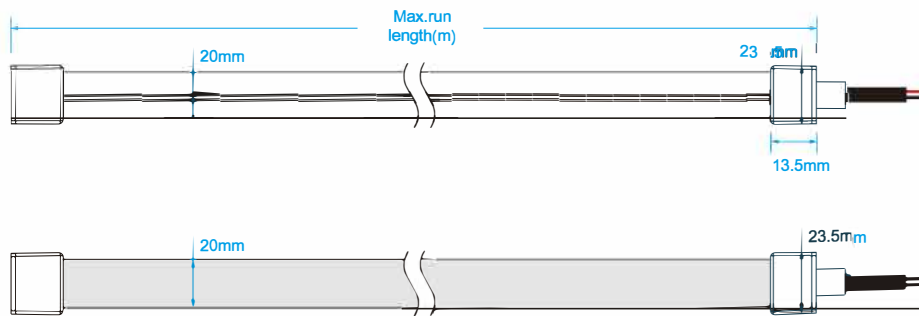
Eight CCT optional from 2100K to 6000K

2100K 2400K 2700K 3000K 3500K 4000K 5000K 6000K

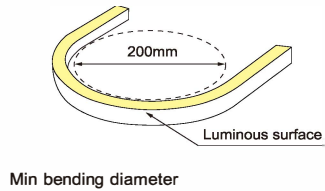
R P G B Y RGB RGBW



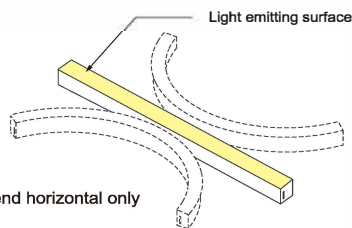
## Dimensions & Waterproof



Across section size's picture



Min bending diameter



Bend horizontal only

## Electrical Parameter

Voltage	DC24V
LED PIN Temperature	Max. 65℃
Storage Temperature	-25℃~ 60℃
Ambient Temperature	Min.-25℃ Max ( Table below)
CRI	>90

## Specification

Power	5 w/m	10 w/m	15 w/m
Efficacy@4000K	48 lm/w	47 lm/w	42 lm/w
Max Ambient Temperature	55℃	45℃	35℃

Due to the tolerance of the production and electrical components,output value and electrical power can vary up to 10%

## Single color parameters

Part Number	CCT (K)	Unit cut (mm)	CV/CC	Low power(5w/m)		Medium power(10w/m)		High power(15w/m)	
				(lm/m)	(max length)	(lm/m)	(max length)	(lm/m)	(max length)
▶ LCE-S2020-W21	2000-2200K	50	CC/CV	198	27m	382	17m	546	14m
▶ LCE-S2020-W24	2300-2500K	50	CC/CV	235	27m	453	17m	650	14m
▶ LCE-S2020-W27	2600-2800K	50	CC/CV	239	27m	461	17m	662	14m
▶ LCE-S2020-W30	2900-3100K	50	CC/CV	225	27m	432	17m	617	14m
▶ LCE-S2020-W35	3400-3700K	50	CC/CV	248	27m	480	17m	687	14m
▶ LCE-S2020-W40	3800-4300K	50	CC/CV	242	27m	467	17m	635	14m
▶ LCE-S2020-W50	4800-5300K	50	CC/CV	241	27m	466	17m	665	14m
▶ LCE-S2020-W60	5900-6400K	50	CC/CV	240	27m	464	17m	671	14m

LCE-S2020-R	Red(620-625nm)	50	CC/CV	120	27m	220	17m	300	14m
LCE-S2020-G	Green(515-525nm)	50	CC/CV	185	27m	350	17m	495	14m
LCE-S2020-B	Blue(460-465nm)	50	CC/CV	53	27m	95	17m	128	14m
LCE-S2020-Y	Yellow(585-595nm)	50	CC/CV	110	27m	205	17m	293	14m
LCE-S2020-P	Pink	50	CC/CV	180	27m	340	17m	480	14m

Note: CC stands for constan curren, CV stands for constan! voltage, max length of CV is 5m.

## Tunable color parameters

Part Number	CCT (K)	Unit cut (mm)	CV/CC	Low power(5w/m) (lm/m) (max length)		Medium power(10w/m) (lm/m) (max length)		High power(15w/m) (lm/m) (max length)	
▶ LCE-S2020-TW	WW:2600-2800K	50	CV	131	5m	250	5m	360	5m
▶ LCE-S2020-TW	CW:5100-5700K	50	CV	133	5m	256	5m	368	5m
▶ LCE-S2020-TW	WW+CW:3800-4300K	50	CV	251	5m	489	5m	693	5m

## RGB & RGBW color parameters

Part Number	Color (nm)	Unit cut (mm)	CV/CC	Low power(5w/m) (lm/m) (max length)		Medium power(10w/m) (lm/m) (max length)		High power(15w/m) (lm/m) (max length)	
▶ LCE-S2020-RGB	R	62.5	CV	31	5m	60	5m	80	5m
▶ LCE-S2020-RGB	G	62.5	CV	68	5m	133	5m	188	5m
▶ LCE-S2020-RGB	B	62.5	CV	14	5m	25	5m	33	5m
▶ LCE-S2020-RGB	RGB	62.5	CV	112	5m	209	5m	284	5m

▶ LCE-S2020-RGBW	R	62.5	CV	18	5m	35	5m	47	5m
▶ LCE-S2020-RGBW	G	62.5	CV	50	5m	96	5m	136	5m
▶ LCE-S2020-RGBW	B	62.5	CV	16	5m	29	5m	39	5m
▶ LCE-S2020-RGBW (2300-2500K)	W	62.5	CV	63	5m	122	5m	176	5m
▶ LCE-S2020-RGBW	RGBW	62.5	CV	153	5m	285	5m	396	5m

▶ LCE-S2020-RGBW	R	62.5	CV	18	5m	35	5m	47	5m
▶ LCE-S2020-RGBW	G	62.5	CV	50	5m	96	5m	136	5m
▶ LCE-S2020-RGBW	B	62.5	CV	16	5m	29	5m	39	5m
▶ LCE-S2020-RGBW (2600-2800K)	W	62.5	CV	67	5m	130	5m	185	5m
▶ LCE-S2020-RGBW	RGBW	62.5	CV	157	5m	293	5m	413	5m

▶ LCE-S2020-RGBW	R	62.5	CV	18	5m	35	5m	47	5m
▶ LCE-S2020-RGBW	G	62.5	CV	50	5m	96	5m	136	5m
▶ LCE-S2020-RGBW	B	62.5	CV	16	5m	29	5m	39	5m
▶ LCE-S2020-RGBW (3600-4000K)	W	62.5	CV	67	5m	130	5m	186	5m
▶ LCE-S2020-RGBW	RGBW	62.5	CV	163	5m	305	5m	426	5m

▶ LCE-S2020-RGBW	R	62.5	CV	18	5m	35	5m	47	5m
▶ LCE-S2020-RGBW	G	62.5	CV	50	5m	96	5m	136	5m
▶ LCE-S2020-RGBW	B	62.5	CV	16	5m	29	5m	39	5m
▶ LCE-S2020-RGBW (4800-5300K)	W	62.5	CV	71	5m	136	5m	195	5m
▶ LCE-S2020-RGBW	RGBW	62.5	CV	163	5m	305	5m	426	5m

Note: The given data are typical values due to the tolerance of the production and electrical components, output value and electrical power can vary up to 10%

## Cautions

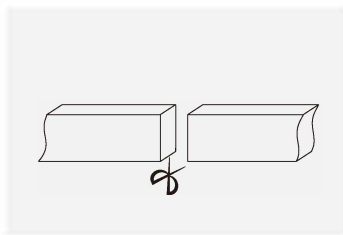
The unused product and unused product after unpacking should be sealed with the packaging bag to avoid prolonged exposure.

Tests showed that nail and benzene substances will have yellowing effects on silicone gel; in the new indoor decoration environment, epoxy floor paint, wall paint, wallpaper adhesive, various decoration materials or new furniture, possibly release of nail and benzene substances, it is recommended to remove formaldehyde and benzene or ventilate for a period of time in the new indoor decoration environment, and then install the neon strip to avoid yellowing of the silicone gel.

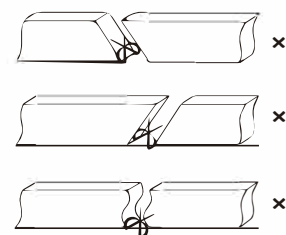
## Cutting Mark



**Remark:** The bottom of the led strip has transparent window, the black marker is the cutting position



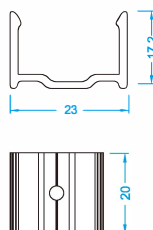
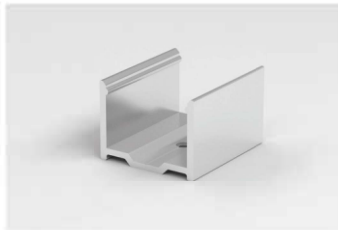
Vertical cutting precisely in the exact cutting position of led strip.



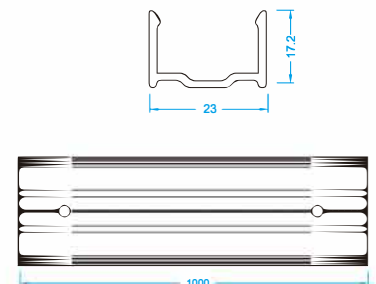
Please don't be feel free to cut and cut into an oblique angle or cambered section.

## Mounting Way

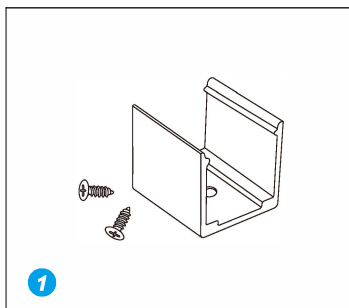
Aluminium Mounting clips



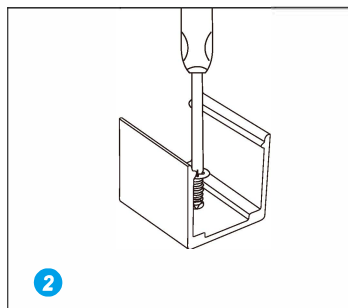
Aluminium Profile



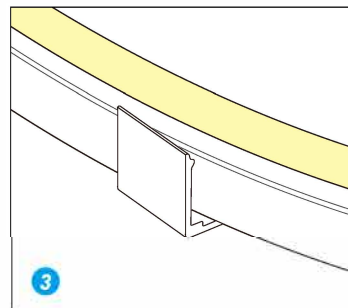
## Installation



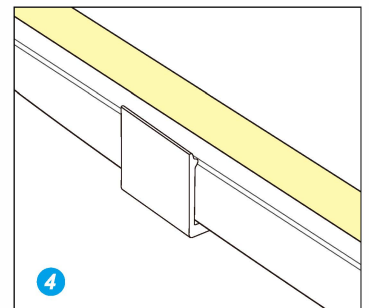
1 Prepare the screws and mounting clips



2 Adjust the fixed clips to the appropriate place, use a screwdriver to fix the screw.



3 Put the light emitting surface upwards, then insert the LED strip into the fixed clips.



4 Fix NEON strip completely into the fixed clip.